

MODULAR ELECTROLYSER CABINET



Designed for **small-capacity** hydrogen power, or to be integrated into a more powerful device, this modular electrolyser provide the modularity needed for all scalable hydrogen projects.

This product is the culmination of 10 years of experience in in situ hydrogen production.

ADVANTAGES AND PERFORMANCES



Proven technology
10 years of use
by PowiDian



Optimized start-up
Instant start-up and reactivity



Maintenance
Integrated by design



Indoor use



Power control
from 15 to 100 % P_n

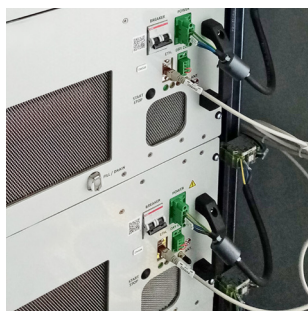
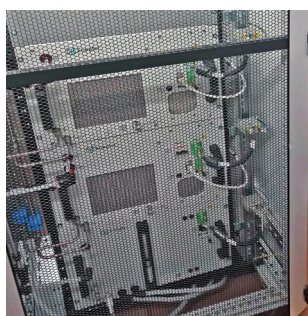


Purity
99,999 %



PowiDian
Energy

MODULAR ELECTROLYSER CABINET



SPECIFICATIONS

Electrical

Data	Standard
Input voltage	400 Vac 3P+N+T (option 48Vdc)
Frequency	50 Hz (option 60 Hz)
Nominal power	12,2 kW
Peak power	16,1 kW
Minimal power	1,5 kW
Efficiency	54,4 kWh/kg

Hydrogen

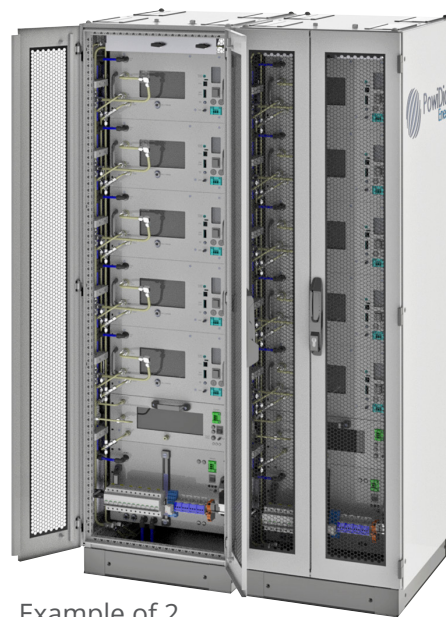
Maximum output flow	2,5 Nm ³ /h
Output pressure	35 barg
Purity	99,999 % (ISO 14687)

Water supply

Pressure	1 to 4 barg
Quality	ASTM D1193-06 Type III

Mechanical and environmental

Dimensions	600 x 800 x 2125 mm (WxDxH)
Operating temperature	5 to 45 °C
Altitude	< 1000 m
Weight	389 kg
Cooling	air cooled



Example of 2
assembled cabinets

Version 2.0

jean-emmanuel.boucher@powidian.com | www.powidian.com | @PowiDian