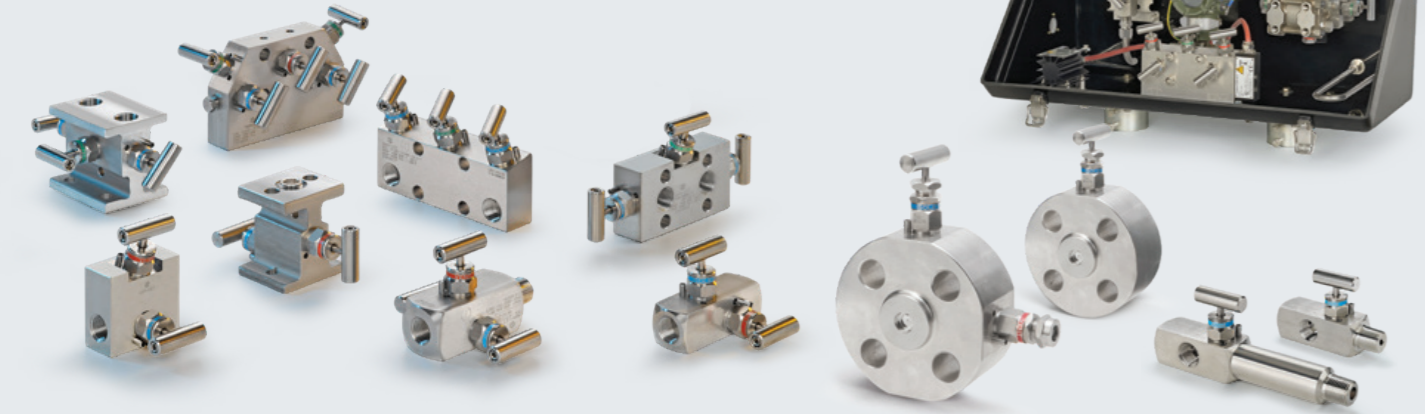


HAM-LET ASTAVA

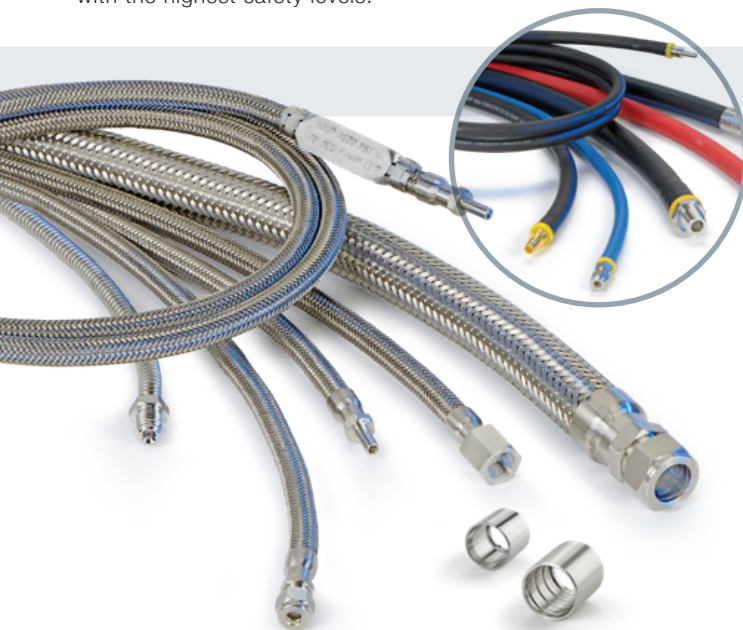
MANIFOLDS INSTRUMENT ENCLOSURES & MONOFLANGE

The HAM-LET ASTAVA Line of Instrument Manifolds consists of a full range of 1, 2, 3, 4, and 5-way instrument manifolds, which are fully compatible with the requirements of the Oil & Gas and Petro-chemical industries, and meet the requirements of most pressure, differential level and flow applications.



HAM-LET HOSES

HAM-LET's Hoses lines include full range of high quality SS hose assemblies, wide range of PTFE core SS braided hose assemblies and end connections. Availability of Full Vacuum to High pressure up to 6,000 psi (413bar), 1/4" up to 2" ID range custom length, all tested and individually packed. All HAM-LET hose assemblies are fitted with HAM-LET's quality fittings providing maximum usability and exchangeability with the highest safety levels.



METAL, PTFE, RUBBER, NYLON, PFA, COMPONENTS, EXPANSION JOINTS

HAM-LET HIGH PRESSURE

The new HAM-LET High Pressure (HHP) product line is a line of High pressure Valves, Fittings, Tubes, Tooling, Pipe Connections and Accessories. The HHP line supports a wide range of gas and liquid systems in various industries, such as oil & gas, chemical and petrochemical, laboratories and research, water-jet cleaning and water-jet cutting.



CUSTOM PRODUCTS

Ham-Let's R&D department is spread across seven countries, allowing us to work worldwide on innovative solutions. We work to create innovative answers to any challenge our partners may face.



www.ham-let.com

HAM-LET GROUP'S GLOBAL PRESENCE

HAM-LET USA INC.

Park 8 Ninety - Building 2
9011 S. Sam Houston Parkway W.,
Suite 190, Missouri City,
TX 77489, USA
Tel: +1 281 566 4900
Fax: +1 281 566 4910
E-mail: usa@ham-let.com

HAM-LET CANADA

3190 Ridgeway Drive, Unit 33
Mississauga, Ontario,
L5L 5S8, Canada
Tel: +1 905 608 9996
Fax: +1 905 608 8661
E-mail: canada@ham-let.com

HAM-LET GmbH

Dornacher Strasse 3a,
D-85622 Feldkirchen, Germany
Tel: +49 899 077 8060
Fax: +49 899 077 8070
E-mail: gmbh@ham-let.com

HAM-LET (UK) FITTINGS & VALVES LTD.

Unit 1, Lindfield Enterprise Park,
Lewes Road, Lindfield
Haywards Heath,
West Sussex RH16 2LH, UK
Tel: +44 144 448 7555
Fax: +44 144 448 7666
E-mail: uk@ham-let.com

CAMBRIDGE FLUID SYSTEMS LTD.

12 Trafalgar Way, Bar Hill,
Cambridge CB23 8SQ, UK
Tel: +44 195 478 6800
Fax: +44 195 478 2164
E-mail: fluidinfo@cambridge-fluid.com

HAM-LET FRANCE SARL

2736 Route de Ravel
69440 Mornant, France
Tel: +33 478 950 342
Fax: +33 472 310 576
E-mail: france@ham-let.com

ASTAVA INTERNATIONAL B.V.

Industrieweg 30
7944 HS Meppel
The Netherlands
Tel: +31 52 223 7030
E-mail: order@astava.com

HAM-LET BENELUX B.V.

Industrieweg 30, 7944 HS,
Meppel, The Netherlands
Tel: +31 522 237 049
Fax: +31 522 237 040
E-mail: benelux@ham-let.com

HAM-LET RUSSIA LLC

Derbenevskay Street, House 1,
Building 6, Room IX,
Apartment 1, Moscow,
115114, Russia
Tel: +7 495 795 9144
E-mail: russia@ham-let.com

NORVALVES AS & HAM-LET SCANDINAVIA

Bleivassvegen 28,
5347 Ågotnes
Norway
Tel: +47 5631 5450
E-mail: sales@norvalves.no

HAM-LET SINGAPORE VALVE & FITTINGS PTE LTD.

1 Bukit Batok Street 22, #
01-04/05,
659592 Singapore
Tel: +65 6100 2890
Fax: +65 6908 9960
E-mail: singapore@ham-let.com

ROVAC PTE LTD.

1 Bukit Batok Street 22, #
01-04/05,
659592 Singapore
Tel: +65 6100 2890
Fax: +65 6908 9960
E-mail: sales@rovac.com.sg

HAM-LET MOTOYAMA JAPAN CO. LTD.

VORT Kayabacho East 8F, 1-16-4,
Shinkawa, Chuo-ku, Tokyo,
104-0033, Japan
Tel: +81 351 178 980
Fax: +81 351 178 983
E-mail: hmj@ham-let.com

S&S VALVES CO. LTD. & HAM-LET KOREA

Namsan Square Building 20F,
173 Toegye-ro, Jung-gu,
Seoul, 04554, South Korea
Tel: +82 273 56521
Fax: +82 273 52433
E-mail: sales@snsvalve.co.kr

JIANGSU XINGHE VALVE CO. LTD.

Yangzhong Economic Development
Zone, Xinglong Section, Yangzhong
City, Jiangsu Province, 212215
China
Tel: +86 511 8845 3666
Fax: +86 511 8845 0666
E-mail: JSXH@ham-Let.com

HAM-LET CHINA (SHANGHAI) TRADE CO., LTD.

Room 2214/2215, Building B,
Far East International Plaza, No. 317
Xian Xia Road, Changning District,
Shanghai 200051, China
Tel: +86 511 8845 3666
Fax: +86 511 8845 0666
E-mail: JSXH@ham-Let.com

HAM-LET LATIN AMERICA

Alameda Santos, 1325/45, Sao Paulo,
SP, Brazil
Tel: +55 112 836 4507
E-mail: Latam@ham-let.com



HAM-LET IN THE WORLD OF

Oil&Gas

Products at a glance Eng. 3902598 Photography: warhaftig-venezian, Printed 07/2019



HAM-LET QUALITY CERTIFICATIONS



HAM-LET GROUP IS LEADING INNOVATION SINCE 1950

Founded in 1950, HAM-LET Group is a global leading manufacturer, specializes in the design, development, manufacturing and distribution of smart and high quality instrumentation valves, fittings, systems and solutions for Semiconductor, Transportation and Alternative Fuels, Power, Oil & Gas, Shipyards, Pharmaceutical, Analytical, Chemical and Refinery industries. The company offers a wide range of instrumentation equipment for high pressure systems and severe working conditions, as well as innovative products and solutions for industry 4.0 IOT environments and new control methods. The products are used in different environments on ground, sea, sub-sea, airborne and ultra-high purity. Ham-Let group HQ is located in Nof Hagalil, Israel, 14 global branches, 8 global manufacturing plants, 7 R&D centers, 1 technology incubator and over 150 global distribution centers. Quality is an integral part of the development, engineering, production and planning processes at HAM-LET Group, starting from raw materials inspection, followed by ongoing quality assurance during production and finally through testing and inspection of the final product before delivery. HAM-LET Group quality levels meet the highest standards including: ISO 9001, ISO 14001, OHSAS 18001, ISO 15848, Lloyds, ABS, DNV, S.A.E. CE (P.E.D.), ECE Regulation 110, ASME Standards and ASTM Standards.



PRESSURE GAUGES

HAM-LET Measurement Devices Pressure Gauges are bourdon tube measuring devices that guaranty long lasting usage with high durability for in-door and out-door industrial, process and instrumentation applications. Our Pressure Gauges line covers the standard characteristics and extent customization upon request.



PNEUMATIC ACTUATORS

Pneumatic Rack and Pinion Actuators



HAM-LET INSTRUMENTATION VALVES



High Performance Ball Valves - H-6800 series
MAWP: 6,000 psi (413 bar)
MAWT: 500°F (260°C)



3 Piece Ball Valves - H-500 series
MAWP: 3,000 psi (206 bar)
MAWT: 450°F (232°C)



Compact One Piece Ball Valves - H-800 series
MAWP: 3,000 psi (206 bar)
MAWT: 300°F (149°C)



Ball Valves with Locking Device - H-700 series
MAWP: 2,000 psi (137 bar)
MAWT: 400°F (204°C)



Metering Valves - H-1300 series
MAWP: 2,000 psi (137 bar)
MAWT: 450°F (232°C)



Metering Ball Valves - MBV series
MAWP: 2,000 psi (137 bar)
MAWT: 300°F (150°C)



Integral Bonnet Needle Valves - H-300U series
MAWP: 5,000 psi (345 bar)
MAWT: 446°F (230°C)



High Pressure Needle Valves - H-300U series
MAWP: 10,000 psi (690 bar)
MAWT: 1200°F (648°C)



Toggle Valves - H-1200 series
MAWP: 300 psi (20 bar)
MAWT: 20° to 200°F (-28° to 93°C)



Check Valves - High Pressure, One Piece & Adjustable - H-400
MAWP: 6,000 psi (413 bar)
MAWT: -40° to 250°F (-40° to 121°C)



QCLOK® Quick Connectors 1/4", 3/8", 1/2"
MAWP: 3,000 psi (413 bar)
MAWT: 500°F (260°C)



Relief Valves - H-900 & H-900HP series
MAWP: 6,000 psi (413 bar)
MAWT: 300°F (148°C)

HAM-LET CONNECTORS



T-Type & In-Line Filters - H-600 series
MAWP: 6,000 psi (413 bar)
MAWT: 900°F (482°C)



Excess Flow Valves - H-911 series
MAWP: 6,000 psi (413 bar)
MAWT: 400°F (204°C)



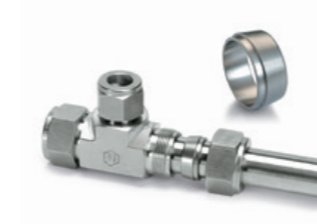
Ham-Let Sample Cylinder and Needle Valve with Rupture Disc
MAWP: 3,000 psi (206Bar)
MAWT: -58F to 450F (-50C to 232C)



Valves for CNG/NGV Applications - ECE R110 approved



LET-LOK® Compression Tube Fittings
Sizes: 1/16" to 2" 3mm to 50mm
Pressure: Up to 12,000 psi



ONE-LOK® Single Ferrule fittings
Sizes: 1/16" to 1" 3mm to 25mm
Pressure: Up to 12,000 psi



PIPELINE Instrument Weld Fittings
Sizes: 1/16" to 2"
Pressure: Up to 11,000 psi



SAE37°FLARE® 37° Flare Fittings
Sizes: 1/8" to 2"
Pressure: Up to 5,000 psi



WELDLINE Instrument Weld Fittings
Sizes: 1/4" to 1-1/2"
Pressure: Up to 10,300 psi



HOSE-END™ Fittings
Fittings created to specifically work with a variety of hose ends.
Sizes: 1/4" to 1"



UHLINE Ultra Vacuum Fittings
Sizes: 1/4" to 1"



FLANGS HAM-LET Flange Adapters
Flange connectors for LET-LOK and NPT Male/Female fittings up to 2".